

15BY45

典型应用领域:

- 微型热敏打印机
- 医疗器械
- 监控器

Typical Applications:

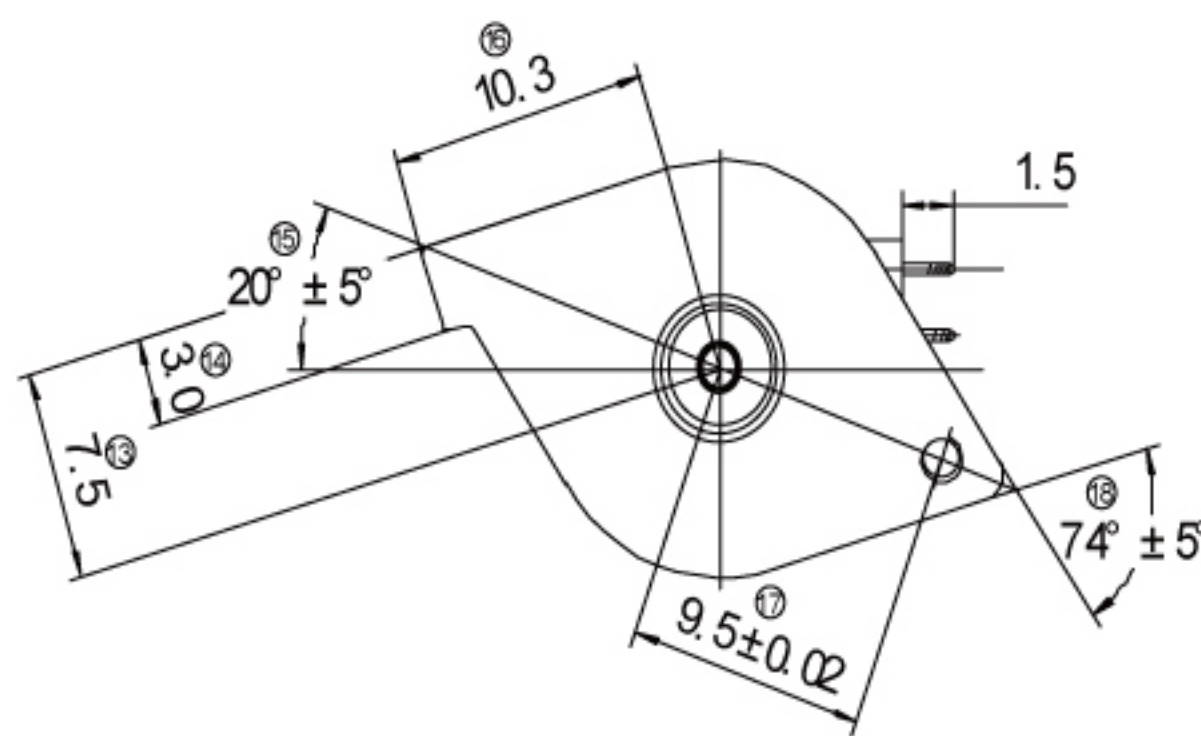
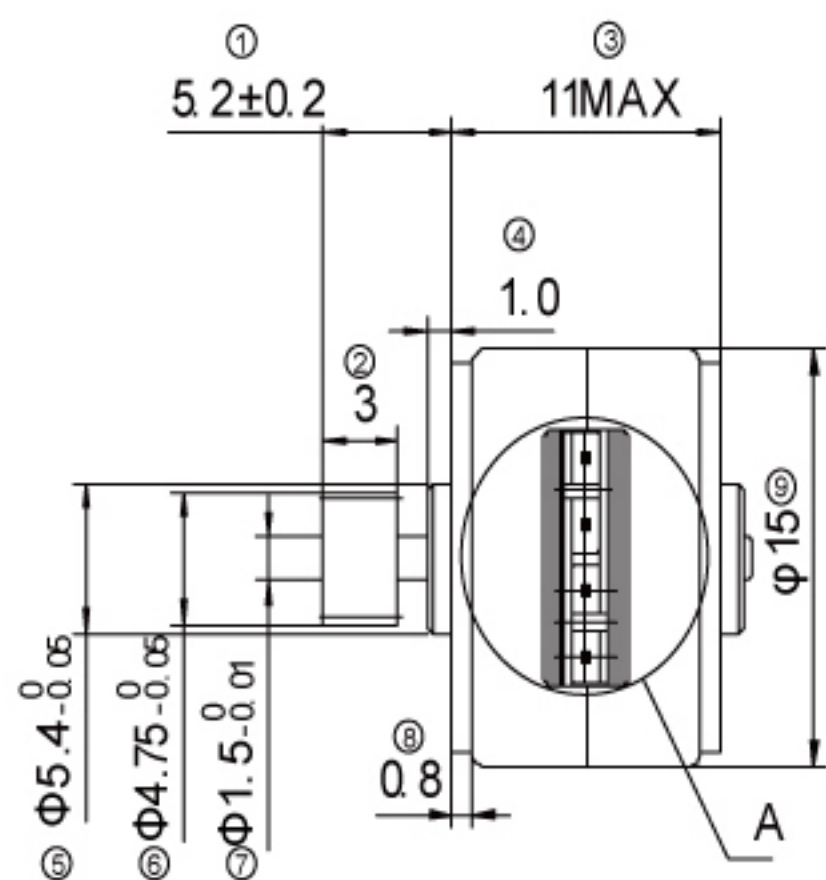
- Micro-thermal Printer
- Medical Equipment
- CCTV Monitor



性能参数 Performance Parameters

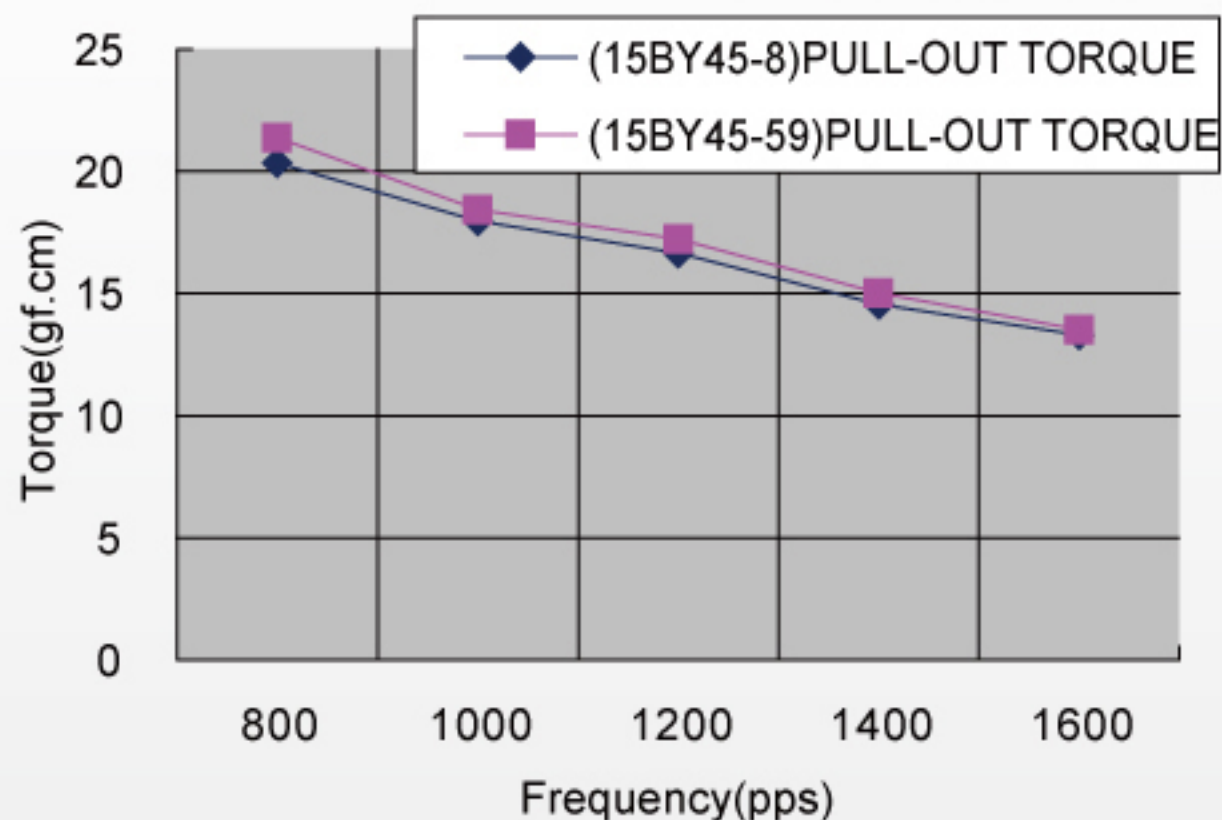
电机尺寸 Motor Size	步进角 Step Angle	驱动方式 Drive Method	驱动电路 Drive Circuit	驱动电压 Drive Voltage	电流 Current /phase	线圈电阻 Coil Resistance /phase	驱动IC Drive IC	磁铁材质 Magnet material	绝缘电阻 Insulation Resistance	绝缘耐压 Dielectric Strength	绝缘等级 Class of Insulation	工作温度 Operating Temp	储存温度 Storage Temp	运行杂声 Operating Hum
15mm	20(18°/Step)	2-2 PHASE 2-2相	BIPOLAR CONST. VOLT	5[V] 7.2[V]	-	(15BY45-8)12[Ω] (15BY45-59)10[Ω] (15BY45-9)30[Ω]	μpd 16813	Nd-Fe-B	100M[Ω]MIN	AC 500[V]1[min]	CLASS E	-10[°C] ~50[°C]	-30[°C] ~80[°C]	20[%]RH ~90[%]RH

机械尺寸 Mechanical Dimensions:mm



矩频曲线图 Frequency-torque characteristics

15BY45-8/59 BIPOLAR CONST.VOLT(at5[V],12[Ω]/10[Ω])



15BY45-9 BIPOLAR CONST.VOLT(at7.2[V],30[Ω])

