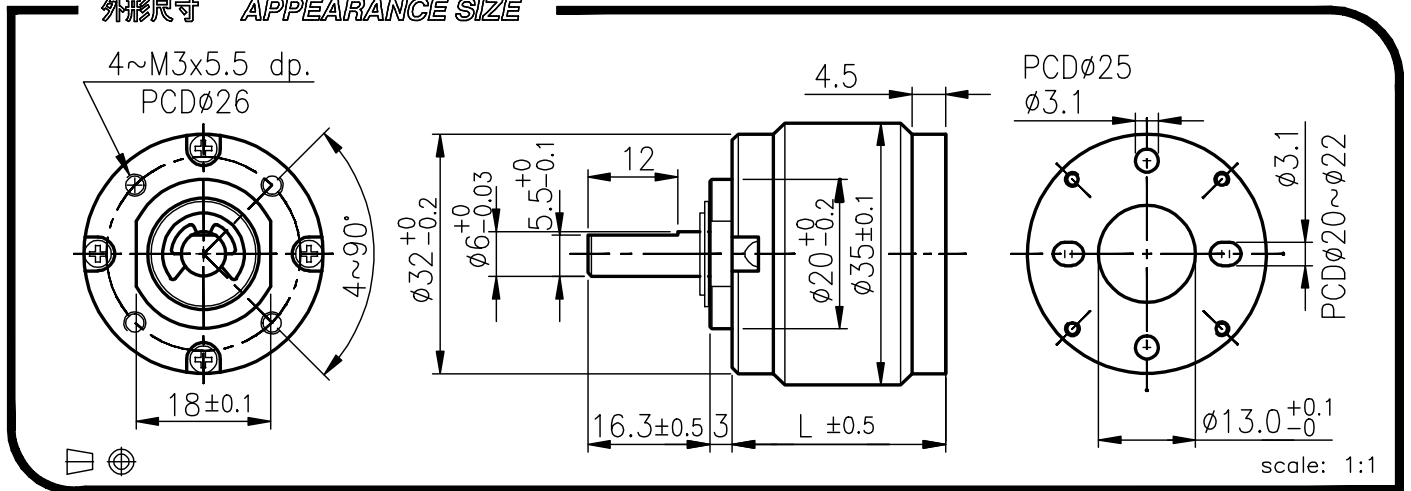


# IG-32P



外殼材質 Housing material	粉末金屬 Powder metal	背隙 (無負荷時) Backlash, at no-load	≤ 2.5°
輸出軸承型式 Bearing at output		含油軸承 Sleeve bearings	滾珠軸承 Ball bearings
徑向負荷 Radial load (10mm from flange)		≤ 3 kgf	≤ 3.5 kgf
軸向負荷 Shaft axial load		≤ 2.5 kgf	≤ 2.5 kgf
主軸最大承受壓入力 Shaft press fit force, max.		≤ 10 kgf	≤ 10 kgf
徑向間隙 Radial play of shaft		≤ 0.08 mm	≤ 0.05 mm
軸向間隙 Thrust play of shaft		≤ 0.3 mm	≤ 0.3 mm

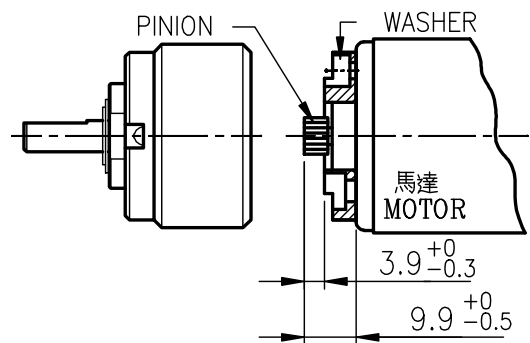
外形尺寸 APPEARANCE SIZE



馬達齒輪型式 / PINION SPECIFICATIONS

模數 Module	0.5		
齒數 No. of teeth	11	17	
壓力角 Pressure angle	20°		
孔徑 Hole diameter	$\phi$ 2.28, $\phi$ 2.48, $\phi$ 2.98, $\phi$ 3.16		
減速比 Reduction ratio	1/5, 1/71, 1/264	1/19, 1/100, 1/516	1/27, 1/139, 1/721, 1/4, 1/14, 1/189

馬達裝卸方法 / MOTOR INSTALLATION



標準減速比型式 / GEARBOXES SPECIFICATIONS

★ 使用相對溼度: 20%~85%RH    ★ 使用溫度範圍: -10°C~+60°C  
Operating relative humidity    Operating temperature range

減速比 Reduction ratio	精確減速比 Exact reduction ratio	定格容許扭力 Rated tolerance torque	瞬間容許扭力 Max momentary tolerance torque	效率 Efficiency	L	重量(含油軸承) Weight (g) Sleeve bearings	重量(滾珠軸承) Weight (g) Ball bearings
1/4,1/5	3 <sub>12/17</sub> , 5 <sub>2/11</sub>	2.0 kgf-cm Max.	6.0 kgf-cm	80%	22.1	109	108
1/14,1/19	13 <sub>212/289</sub> , 19 <sub>38/187</sub>	4.0 kgf-cm Max.	12.0 kgf-cm	70%	28.5	143	142
1/27	26 <sub>103/121</sub>	6.0 kgf-cm Max.	18.0 kgf-cm	70%	28.5	143	142
1/51,1/71	50 <sub>4397/4913</sub> , 71 <sub>524/3179</sub>	8.0 kgf-cm Max.	24.0 kgf-cm	60%	34.9	177	176
1/100	99 <sub>1044/2057</sub>	10.0 kgf-cm Max.	30.0 kgf-cm	60%	34.9	177	176
1/139	139 <sub>184/1331</sub>	10.0 kgf-cm Max.	30.0 kgf-cm	60%	34.9	177	176
1/189	188 <sub>51013/83521</sub>	12.0 kgf-cm Max.	36.0 kgf-cm	50%	41.3	211	210
1/264	263 <sub>39370/54043</sub>	12.0 kgf-cm Max.	36.0 kgf-cm	50%	41.3	211	210
1/516	515 <sub>14254/22627</sub>	12.0 kgf-cm Max.	36.0 kgf-cm	50%	41.3	211	210
1/721	720 <sub>14481/14641</sub>	12.0 kgf-cm Max.	36.0 kgf-cm	50%	41.3	211	210

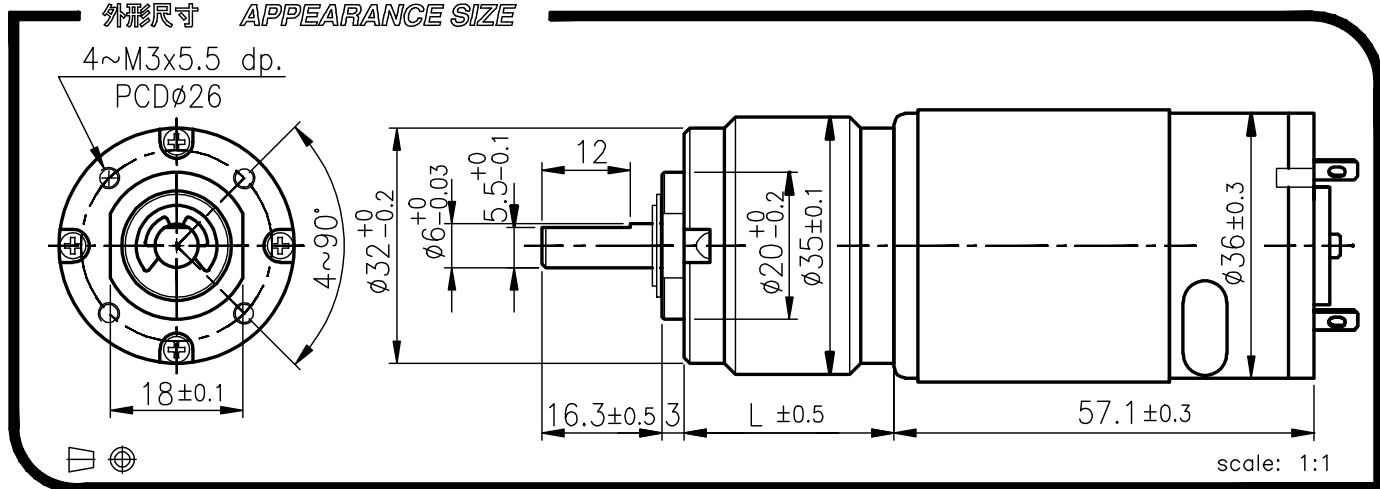
# IG-32PGM

## 01&02 TYPE



REDUCTION RATIO	L	REDUCTION RATIO	L
1/4~1/5	22.1	1/51~1/139	34.9
1/14~1/27	28.5	1/189~1/721	41.3

外形尺寸 APPEARANCE SIZE



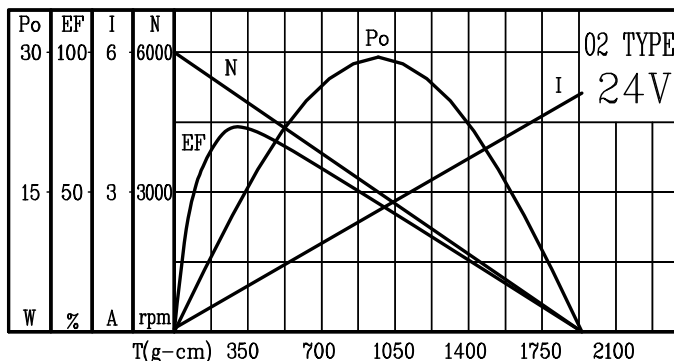
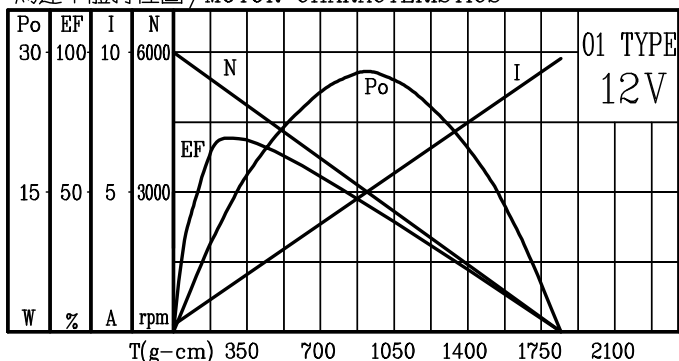
GEARED MOTOR TORQUE/SPEED

	減速比 Reduction ratio	1/5	1/14	1/19	1/27	1/51	1/71	1/100	1/139	1/189	1/264	1/516	1/721				
		12V	1.0	2.4	3.3	4.7	7.6	8	10	10	12	12	12	12			
	定額扭力(Kg-cm) Rated torque																
	定額回轉數(rpm) Rated speed	950	359	257	183	97	71.5	52	39	29	21	11	8				
24V	定額扭力(Kg-cm) Rated torque	1.0	2.3	3.2	4.5	7.3	8	10	10	12	12	12	12				
	定額回轉數(rpm) Rated speed	990	375	268	192	101	74.5	54	40	29.5	22	11.5	8				

馬達單體型式 / MOTOR DATA

定額電壓 Rated volt (V)	定額扭力 Rated torque (g-cm)	定額回轉數 Rated speed (rpm)	定額電流 Rated current (mA)	無負荷回轉數 No load speed (rpm)	無負荷電流 No load current (mA)	定額出力 Rated output (W)	重量 Weight (g)
12	250	4930	≤ 1600	6000	≤ 250	12.80	220
24	240	5150	≤ 750	6000	≤ 130	12.70	220

馬達單體特性圖 / MOTOR CHARACTERISTICS



# IG-32PGM

## 41&42 TYPE

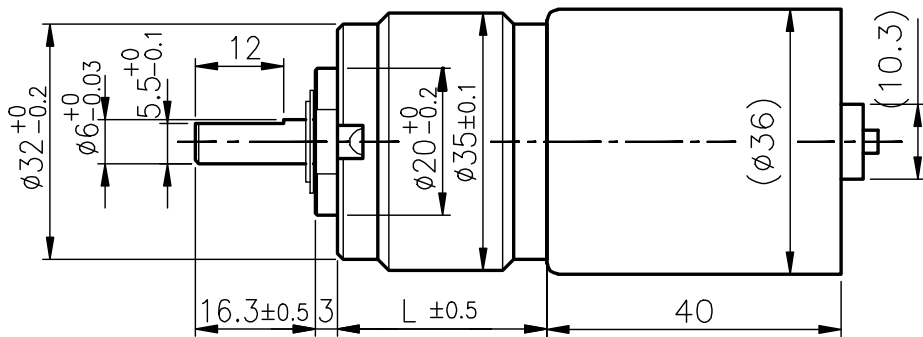
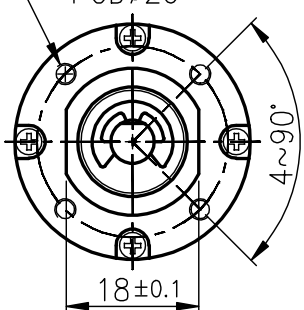


REDUCTION RATIO	L	REDUCTION RATIO	L
1/4~1/5	22.1	1/51~1/139	34.9
1/14~1/27	28.5	1/189~1/721	41.3

外形尺寸 APPEARANCE SIZE

4~M3x5.5 dp.

PCD $\phi$ 26



scale: 1:1

GEARED MOTOR TORQUE/SPEED

	減速比 Reduction ratio	1/5	1/14	1/19	1/27	1/51	1/71	1/100	1/139	1/189	1/264	1/516	1/721				
		0.8	1.9	2.6	3.7	6.1	8	10	10	12	12	12	12				
12V	定格扭力(Kg-cm) Rated torque																
	定格回轉數(rpm) Rated speed	380	140	100	73	38	28	20	15.5	11.5	8.5	4.5	3.4				
24V	定格扭力(Kg-cm) Rated torque	1.0	2.4	3.3	4.7	7.6	8	10	10	12	12	12	12				
	定格回轉數(rpm) Rated speed	750	280	200	145	76	54	40	30	23	17	8.5	6.2				

馬達單體型式 / MOTOR DATA

定格電壓 Rated volt (V)	定格扭力 Rated torque (g-cm)	定格回轉數 Rated speed (rpm)	定格電流 Rated current (mA)	無負荷回轉數 No load speed (rpm)	無負荷電流 No load current (mA)	定格出力 Rated output (W)	重量 Weight (g)
12	200	2000	≤ 1000	2800	≤ 350	4.1	145
24	250	3900	≤ 1230	5000	≤ 400	10	145

馬達單體特性圖 / MOTOR CHARACTERISTICS

