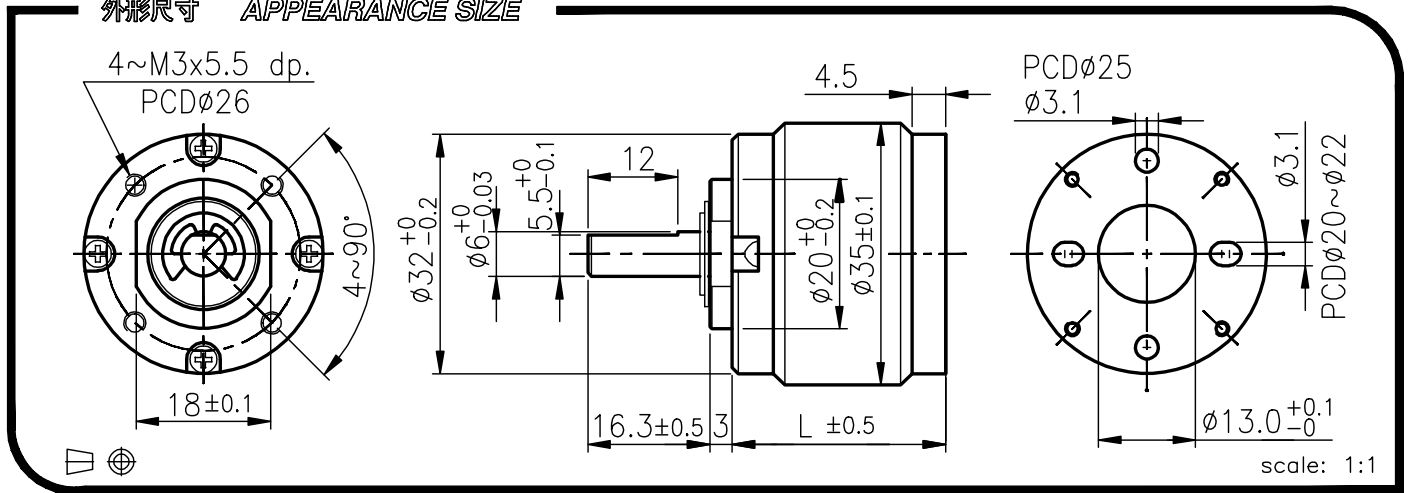


# IG-32PH



外殼材質 Housing material	粉末金屬 Powder metal	背隙 (無負荷時) Backlash, at no-load	≤ 2.5°
輸出軸承型式 Bearing at output	含油軸承 Sleeve bearings	滾珠軸承 Ball bearings	
徑向負荷 Radial load (10mm from flange)	≤ 3 kgf	≤ 3.5 kgf	
軸向負荷 Shaft axial load	≤ 2.5 kgf	≤ 2.5 kgf	
主軸最大承受壓入力 Shaft press fit force, max.	≤ 10 kgf	≤ 10 kgf	
徑向間隙 Radial play of shaft	≤ 0.08 mm	≤ 0.05 mm	
軸向間隙 Thrust play of shaft	≤ 0.3 mm	≤ 0.3 mm	

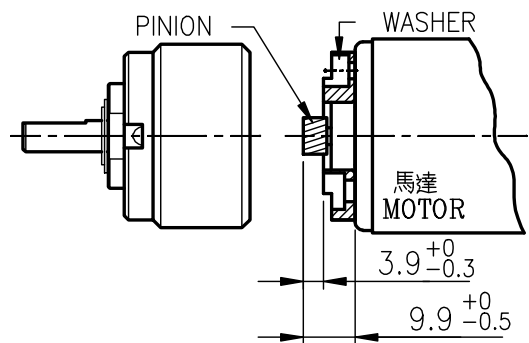
外形尺寸 APPEARANCE SIZE



馬達齒輪型式 / PINION SPECIFICATIONS

模數 Module	0.5		
齒數 No. of teeth	11	17	8
壓力角 Pressure angle	20°		
螺旋角 Helix angle	18°(左, left)		
孔徑 Hole diameter	ø3.16		ø2.28
減速比 Reduction ratio	1/18, 1/25 1/94, 1/132, 1/250 1/349, 1/683,	1/13 1/48, 1/68 1/491,	1/33 1/171 1/887

馬達裝卸方法 / MOTOR INSTALLATION



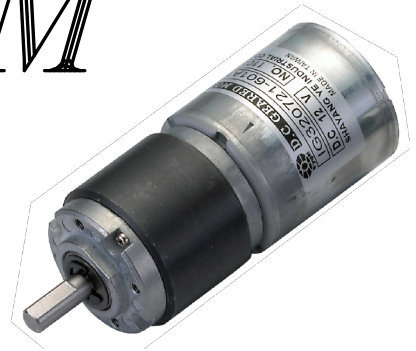
標準減速比型式 / GEARBOXES SPECIFICATIONS

★ 使用相對溼度: 20%~85%RH    ★ 使用溫度範圍: -10°C~+60°C  
Operating relative humidity    Operating temperature range

減速比 Reduction ratio	精確減速比 Exact reduction ratio	定格容許扭力 Rated tolerance torque	瞬間容許扭力 Max momentary tolerance torque	效率 Efficiency	L	重量(含油軸承) Weight (g) Sleeve bearings	重量(滾珠軸承) Weight (g) Ball bearings
1/13, 1/18	13 23/289, 18 36/187	4.0 kgf-cm Max.	12.0 kgf-cm	70%	28.5	143	142
1/25, 1/33	25 53/121, 33 3/88	6.0 kgf-cm Max.	18.0 kgf-cm	70%	28.5	143	142
1/48, 1/68	48 2316/4913, 67 2467/3179	8.0 kgf-cm Max.	24.0 kgf-cm	60%	34.9	177	176
1/94	94 556/2057	10.0 kgf-cm Max.	30.0 kgf-cm	60%	34.9	177	176
1/132, 1/171	131 1085/1331, 171 171/968	10.0 kgf-cm Max.	30.0 kgf-cm	60%	34.9	177	176
1/250	249 45831/54043	12.0 kgf-cm Max.	36.0 kgf-cm	50%	41.3	211	210
1/349	349 12401/34969	12.0 kgf-cm Max.	36.0 kgf-cm	50%	41.3	211	210
1/491	491 1723/22627	12.0 kgf-cm Max.	36.0 kgf-cm	50%	41.3	211	210
1/683	683 619/14641	12.0 kgf-cm Max.	36.0 kgf-cm	50%	41.3	211	210
1/887	887 67/10648	12.0 kgf-cm Max.	36.0 kgf-cm	50%	41.3	211	210

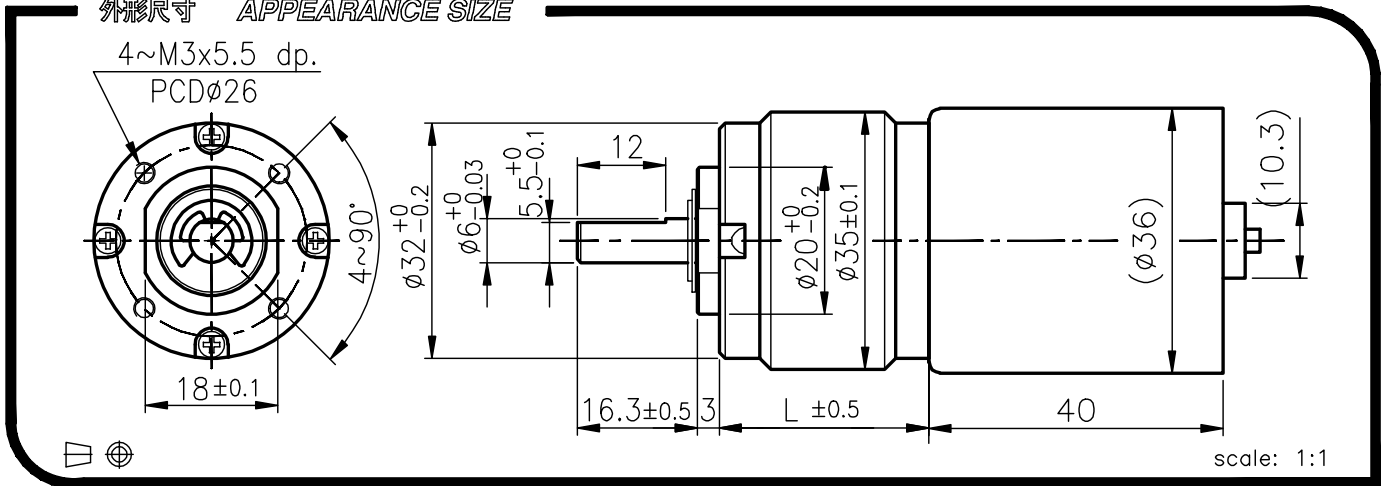
# IG-32PHGM

## 41&42 TYPE



REDUCTION RATIO	L	REDUCTION RATIO	L
1/14~1/27	28.5	1/189~1/721	41.3
1/51~1/139	34.9		

外形尺寸 APPEARANCE SIZE



GEARED MOTOR TORQUE/SPEED

	減速比 Reduction ratio	1	1	1	1	1	1	1	1	1										
		13	18	25	48	68	94	132	250	349	491	683								
12V	定格扭力(Kg-cm) Rated torque	1.8	2.5	3.5	5.8	8	10	10	12	12	12									
	定格回轉數(rpm) Rated speed	150	109	75	41	29.5	21.5	15.5	8.4	6.5	4.4	3.3								
24V	定格扭力(Kg-cm) Rated torque	2.2	3.1	4.4	7.2	8	10	10	12	12	12									
	定格回轉數(rpm) Rated speed	295	210	150	80	58	41.5	30	16.3	12	8.4	6.1								

馬達單體型式 / MOTOR DATA

定格電壓 Rated volt (V)	定格扭力 Rated torque (g-cm)	定格回轉數 Rated speed (rpm)	定格電流 Rated current (mA)	無負荷回轉數 No load speed (rpm)	無負荷電流 No load current (mA)	定格出力 Rated output (W)	重量 Weight (g)
12	200	2000	≤ 1000	2800	≤ 350	4.1	145
24	250	3900	≤ 1230	5000	≤ 400	10	145

馬達單體特性圖 / MOTOR CHARACTERISTICS

