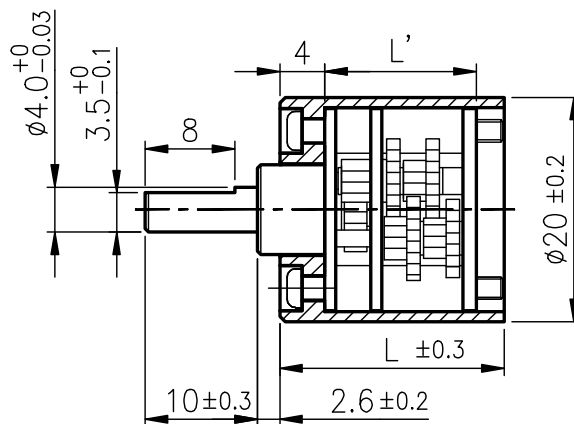
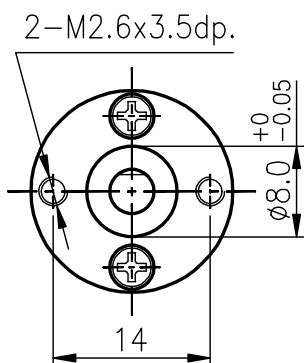


RA-18



外殼材質 Housing material	金屬 metal	背隙 (無負荷時) Backlash, at no-load	≤ 1.5°
輸出軸承型式 Bearing at output	含油軸承 Sleeve bearings		
徑向負荷 Radial load (10mm from flange)	≤ 0.4 kgf		
軸向負荷 Shaft axial load	≤ 0.2 kgf		
主軸最大承受壓力 Shaft press fit force, max.	≤ 2 kgf		
徑向間隙 Radial play of shaft	≤ 0.05 mm		
軸向間隙 Thrust play of shaft	≤ 0.3 mm		

外形尺寸 APPEARANCE SIZE

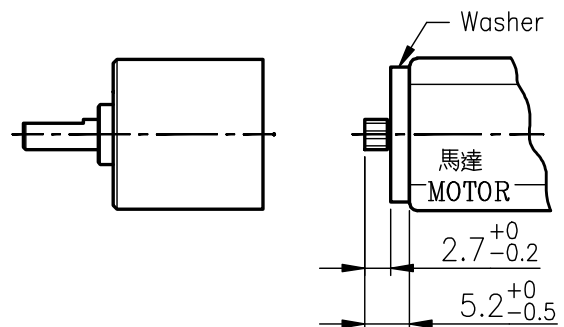


scale: 3:2

馬達齒輪型式 / PINION SPECIFICATIONS

模數 Module	0.25	
齒數 No. of teeth	12	14
壓力角 Pressure angle	20°	
孔徑 Hole diameter	ø1.98	
減速比 Reduction ratio	1/10, 1/13, 1/29, 1/67 1/80, 1/99, 1/150, 1/225 1/350, 1/430, 1/549, 1/689 1/794, 1/866	1/18, 1/42 1/52, 1/120 1/179, 1/275

馬達裝卸方法 / MOTOR INSTALLATION



★ 使用相對溼度: 20%~85%RH ★ 使用溫度範圍: -10°C~+60°C
Operating relative humidity Operating temperature range

標準減速比型式 / GEARBOXES SPECIFICATIONS

減速比 Reduction ratio	精確減速比 Exact reduction ratio	定格容許扭力 Rated tolerance torque	瞬間容許扭力 Max momentary tolerance torque	效率 Efficiency	L'	L	重量 Weight (g)
1/10, 1/13	9 29/30, 12 47/90	0.4 kgf-cm Max.	1.2 kgf-cm	73%	10.0	16.5	24.0
1/18, 1/29	18 12/49, 28 4/5	0.6 kgf-cm Max.	1.8 kgf-cm	65%	13.5	20.0	27.5
1/42, 1/52, 1/67	41 236/245, 51 34/35, 67 11/54	1.0 kgf-cm Max.	3.0 kgf-cm	55%	13.5	20.0	27.5
1/80, 1/99	80 131/830, 99 301/900	1.2 kgf-cm Max.	3.6 kgf-cm	50%	15.3	21.8	29.0
1/120, 1/150	119 931/1750, 150 68/375	1.5 kgf-cm Max.	4.5 kgf-cm	50%	15.3	21.8	29.0
1/179, 1/225	179 84/343, 225 36/175	1.8 kgf-cm Max.	5.4 kgf-cm	45%	18.8	25.3	32.0
1/275, 1/350	274 808/875, 350 19/45	1.8 kgf-cm Max.	5.4 kgf-cm	45%	18.8	25.3	32.0
1/430, 1/549	430 303/675, 548 160/243	1.8 kgf-cm Max.	5.4 kgf-cm	40%	18.8	25.3	32.0
1/689, 1/794	689 248/729, 794 17/37	1.8 kgf-cm Max.	5.4 kgf-cm	40%	18.8	25.3	32.0
1/866	866 23/243	1.8 kgf-cm Max.	5.4 kgf-cm	40%	18.8	25.3	32.0