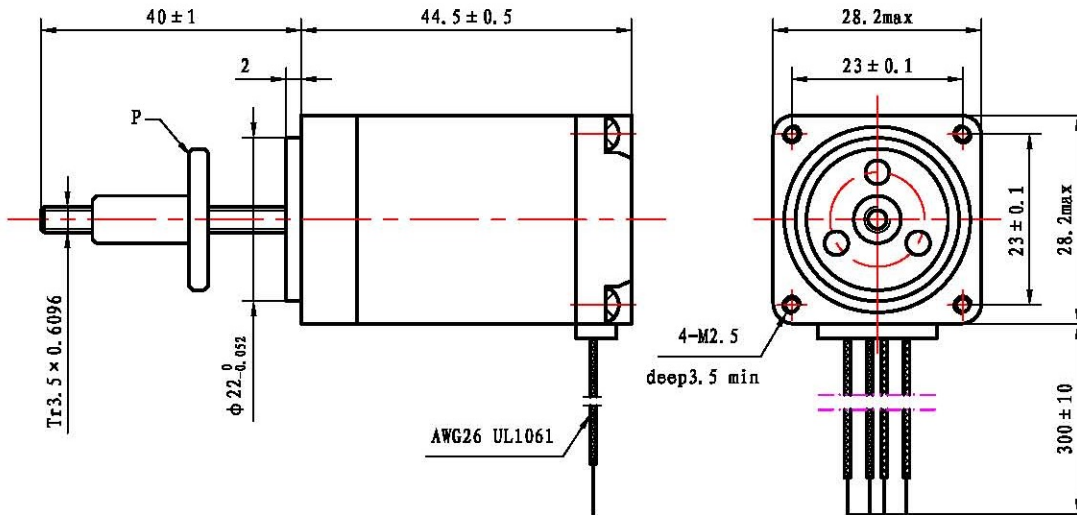
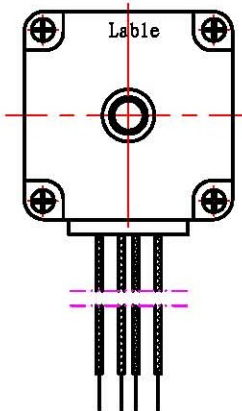
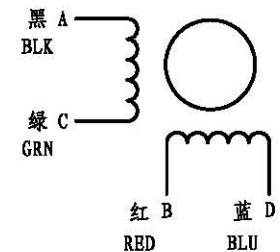


FT3.162.



接线图  
Wiring diagram



励磁顺序和旋转方向  
Excitation sequence and direction of rotation

PHASE STBP	A	B	C	D
1	+	+	-	-
2	-	+	+	-
3	-	-	+	+
4	+	-	-	+

从安装面看为顺时针方向  
seen from the mounting surface,  
it is clockwise

电机打标格式:

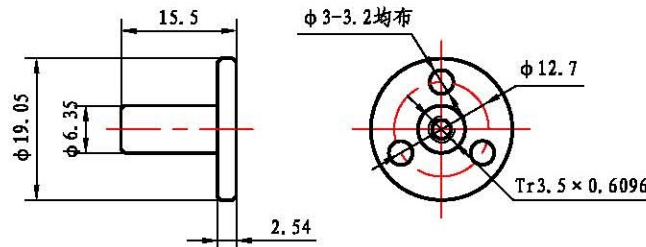
28SHD4405-40N1  
YYYYMMDD RoHS

年月日

规格 Specification

1. 步距角 Step angle	1.8° ± 5%
2. 相数 Number of phase	2
3. 额定电压 Rated voltage	3.78 V DC
4. 额定电流 Rated current	1.4 Amp
5. 保持力矩 Holding torque	100mN.m
6. 定位力矩 Detent torque	5mN.m
7. 相电阻 Phase resistance	2.7ohm ± 10% (At 20°C)
8. 相电感 Phase inductance	1.9mH ± 20% (1kHz rms)
9. 转子惯量 Rotor inertia	9g.cm <sup>2</sup>
10. 电机重量 Motor weight	0.16kg
11. 绝缘电阻 Insulation resistance	100MΩmin. (500V DC)
12. 绝缘等级 Insulation class	Class B

P部 (材质POM)



单位 Unit: 毫米 mm  
第一视角画法  
First angle method  
未注线性与角度尺寸公差  
Unlabeled Linear and angular dimensions  
tolerances  
GB/T1804-m eqv ISO2768-1:m  
未注形状与位置尺寸公差  
Unlabeled shape and position tolerance  
GB/T 1184-K eqv ISO2768-2:K



批准 Approved

标准化 Standard

工艺 Technology

审核 Check

设计 Design

HYBRID STEPPING MOTOR  
TYPE: 28SHD4405-40N1

REV. 版本记录 REVISION RECORD DATE UNLESS OTHERWISE SPECIFIED NAMES SIGNATURE DATE REV. A SCALE 1:1 SHEET 1 of 1